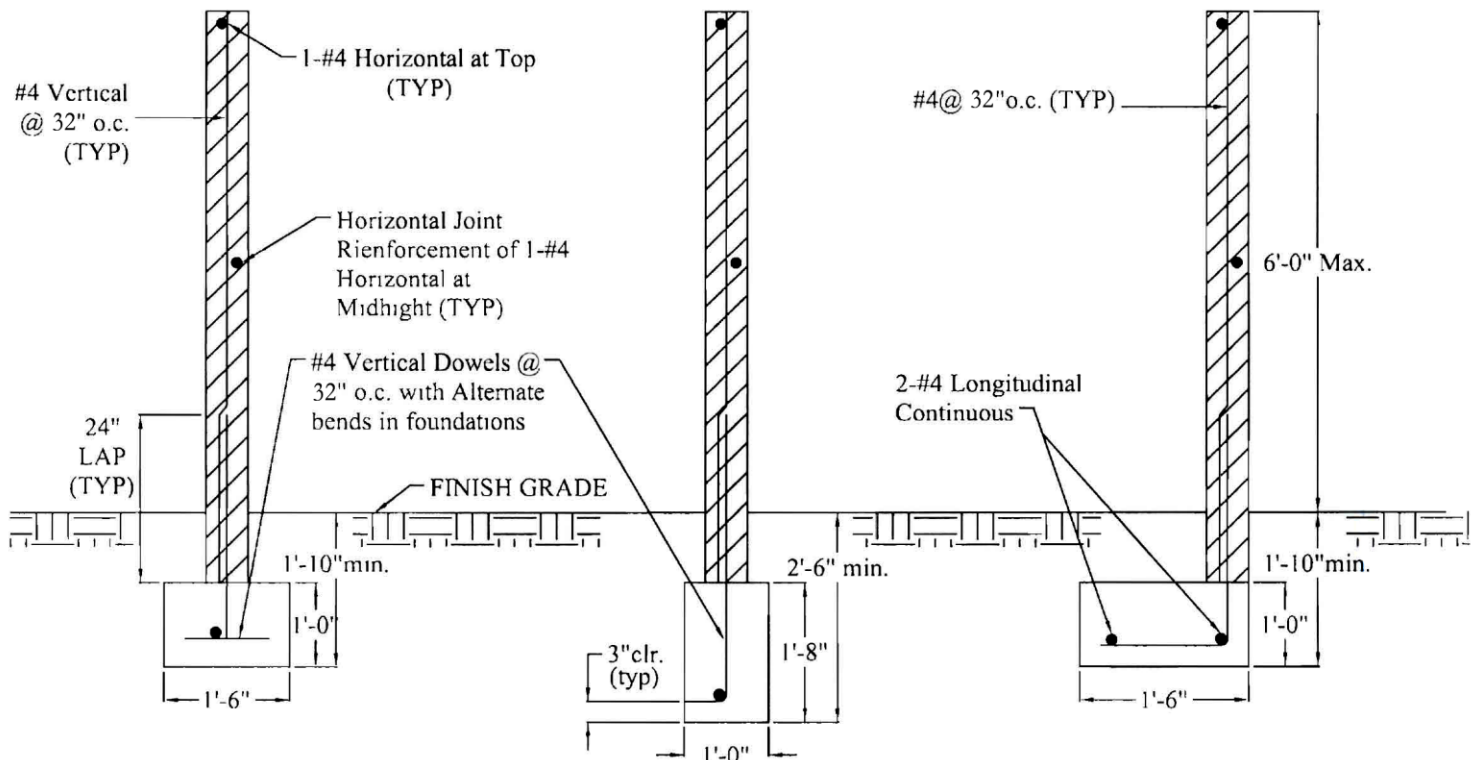


## 6" CONCRETE BLOCK MASONRY WALL DETAIL (6'-0" IN HEIGHT MAXIMUM)



### GENERAL SPECIFICATIONS

1. Concrete mix for footing to be 1 part cement to 2½ parts sand to 3½ parts gravel with a minimum of 7½ gallons of water per sack of cement / minimum  $f_c = 2500$  psi.
2. Concrete block units shall conform to UBC Standard 21-5 or 21-4.
3. Reinforcing steel to be deformed and conformed to ASTM Standard A-615, Grade 40 or Grade 60.
4. Rebar shall be centered in the concrete block cell in which it is located.
5. Concrete block units are to be staggered.
6. Concrete block units to have vertical continuity of cells unobstructed. All cells containing reinforcing shall be solid grouted (vertical and horizontal reinforcement.)
7. Mortar mix for concrete to be 1 part cement to 1/2 part lime to 3 parts damp loose sand.
8. Grout mix for concrete block wall to be 1 part cement 3 parts sand to which may be added not more than 1/10 part lime. Sufficient water to be added to produce consistency for pouring without segregation of the constituents. The grout may contain 2 parts pea gravel, maximum size 3/8".
9. Block fence may be placed in the center of the "I" type foundation and at either edge to "L" type foundation.
10. A first inspection is required when trenches are ready for concrete and all required steel is tied in place. A second inspection is required when first horizontal bar and all vertical bars are in place but not grouted.
11. Foundation must be poured against soil with no appreciable slope of side walls on all types of foundation.
12. Masonry or concrete fences over 30" in height measured from adjacent grade shall require a building permit.
13. Height of fence shall comply with all provisions of the zoning code.

\*Disclaimer: Alternate design may be possible when provided with an engineered analysis. Use of this standard design is at the users risk and carries no implied or inferred guarantee against failure or defects.