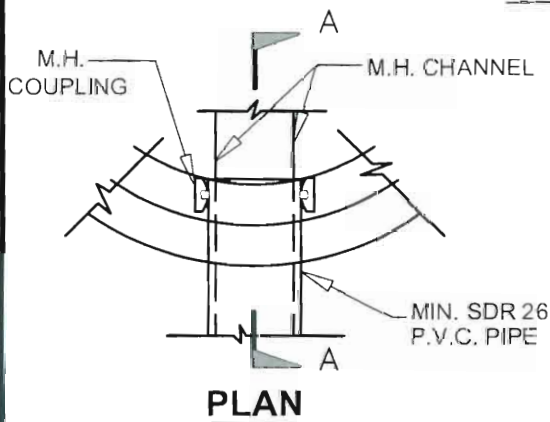
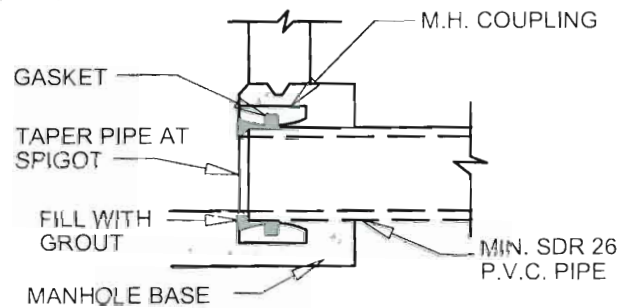


NORMAL BEDDING



PLAN



SECTION A - A

PVC PIPE MANHOLE CONNECTION DETAILS

NOTES:

1. CONCRETE ENCASUREMENT PER BREA STD. PLAN 217 SHALL BE USED WHERE THE TRENCH WIDTH AT THE UPPER LIMIT OF THE PIPE ZONE EXCEEDS THE MAXIMUM WIDTH SPECIFIED ABOVE.
2. IF UNSTABLE SOIL IS ENCOUNTERED, CITY REPRESENTATIVE SHALL DETERMINE DEPTH OF REMOVAL AND THICKNESS OF FOUNDATION ROCK REFILL MATERIAL.
3. SEE BREA STD. PLANS 205 AND 210 FOR MANHOLE DETAILS.



P.V.C. PIPE BEDDING & MANHOLE CONNECTION DETAILS

APPROVED:

[Signature]
CITY ENGINEER

DATE: 10-15-2013

STD. PLAN NUMBER

218-0

SHEET 1 OF 1